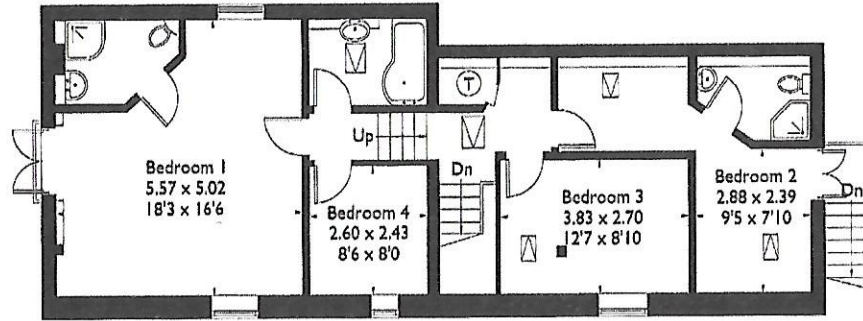


Bayntons Barn, Vicarage Road, Napton, Southam, CV47 8NA

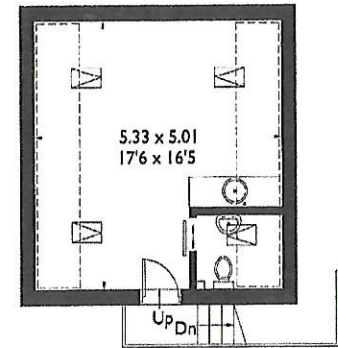
Approximate Gross Internal Area = 172.6 sq m / 1858 sq ft

Garage = 54.7 sq m / 589 sq ft

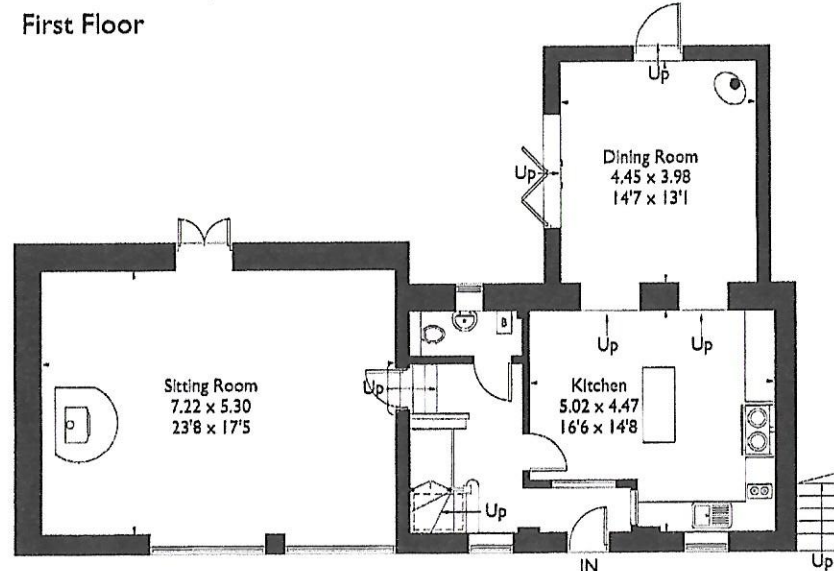
Total = 227.3 sq m / 2447 sq ft



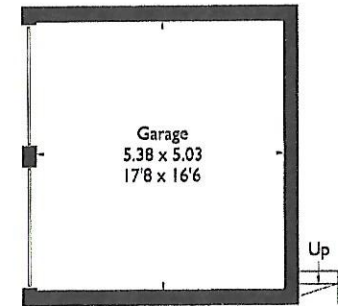
First Floor



Garage - First Floor



Ground Floor



(Not Shown In Actual Location / Orientation)

Garage - Ground Floor

- Four bedrooms
- Three bathrooms
- Large beamed kitchen and dining room
- Double garage / separate office annexe above
- Landscaped, private gardens with stunning views